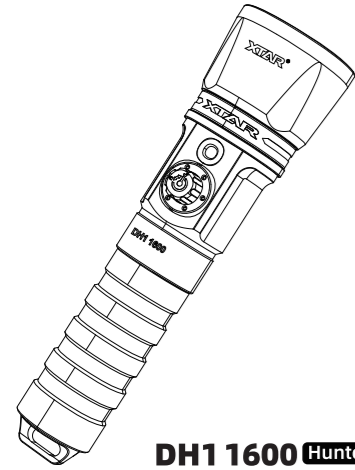
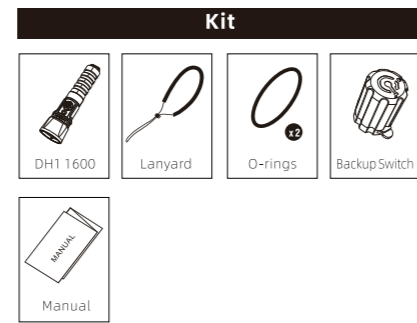
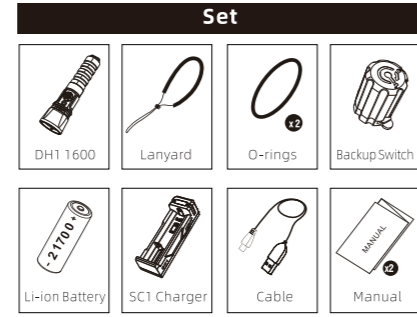
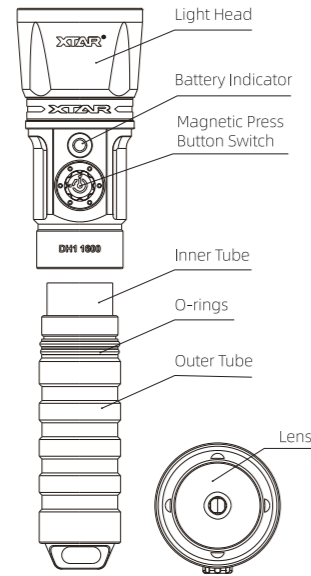


XTAR®
Quality and Innovation
User Manual



DH1 1600 Hunter
Ultra-Narrow Beam High
Lumen Spearfishing Flashlight



Introduction

Tailored for spearfishing, our dive torch stands out with its dual tube configuration ensuring both unparalleled safety and robust performance in underwater environments. With multiple advanced protection features, clear battery indicators, and effortless one-hand operation, this 1600 lumens dive light claims the top spot on the list.

Features

- Luminus SST-40 LED with high luminous efficacy, max 1600 lumens.
- 1*rechargeable 21700 Li-ion battery(recommend protected one).
- Magnetic button switch independent of holistic build to avoid water leakage, single-press on/off by one hand.
- Mechanical locking system to prevent accidental touches.
- Battery indicator.
- Efficient circuit and constant luminous power to extend service life of the LED.
- IPX8 100M depth rating.
- Type III hard anodized surface for better impact resistance, abrasion resistance, and corrosive resistance.
- Light weight, crispy look, easy and convenient to operate
- Electricity transmission via inner tube prevents electrical leakage, effectively reducing saltwater corrosion.
- Amphibious light with reverse polarity protection, over-discharge protection, and intelligent temperature control.

Technical Specifications

Model	DH1 1600
LED	Luminus SST-40
Output	Max 1600LM
Run Time	≥2.5 hours tested using XTAR rechargeable 21700 4900mAh protected Li-ion battery
Battery	1*rechargeable 21700 Li-ion battery Recommend protected one
Spot Beam Angle	5°
Beam Angle	60°
Color Temperature	6500K
Color Rendering Index	70
Max Intensity	31450cd
Max Beam Range	355m
Waterproof Rating	IPX8(100m underwater)
Impact Resistance	1.5m
Switching System	Magnetic press button
Housing Material	Type III hard anodized aluminum alloy
Lens Materials	Tempered glass with anti-reflective coating
Dimensions	168mm(Length) x φ29mm (Outer Tube) x φ45mm(Head)
Net Weight	213g(without battery)

Operation Instructions

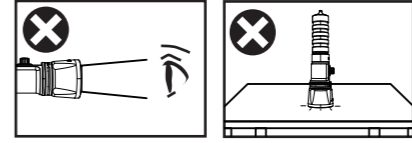
1. Unscrew the outer tube from the head.
2. Check and test performance of the O-rings. Clean, lube, or replace the O-rings if necessary.
3. Insert a full rechargeable 21700 Li-ion battery in with the positive polarity(+) towards the head.
4. Screw the outer tube back to the head.
5. Press the magnetic push button switch once to turn the light on, one more press to turn it off.

Battery Indicator

Green	Red	Blinking Red
Sufficient battery power	Available time: 30 minutes	Available time: 10 minutes

Usage & Maintenance

- 1.Tighten all connections of the light before going underwater.
2. Inspect the seals and O-rings for good condition prior to each dive. Lube the O-rings regularly as well.
- 3.After each use, rinse the light with fresh water to remove any residual salt, sand, and dirt. Dry it with a clean towel before opening battery compartment or storage.
- 4.Remove the battery after each use.
- 5.During use, the light may generate heat and automatically reduce lumens to maximize battery life and the longevity of both the light and the battery while ensuring illumination.
- 6.Never direct the light at eyes to prevent eye damage.
- 7.When the light is on, please do not place with its head facing tabletops, floors, etc., for too long to avoid burning out the LED.



After-Sales Service

- To receive after-sales service for the product, please provide the Warranty Number and an invoice(or receipt).
- **15-day free exchange.**
- **24-month free repair.** This product includes a 24-month free repair service, starting from the day of purchase. For repairs outside of the warranty period, you will need to pay the costs of materials and shipping.
- **Lifetime technical support.**

Note:

- Malfunctions due to improper use or storage, or failure to observe these operating instructions, will not be covered by XTAR.
- If you have any after-sales questions, please contact XTAR official Customer Support at service@xtar.cc.

Authenticity Check

- 1.Gently scratch to reveal the 18-digit serial number on the back of the product or its packaging.
- 2.Go to www.xtar.cc and enter the serial number to authenticate.(Contact Us - Anti-Fake).



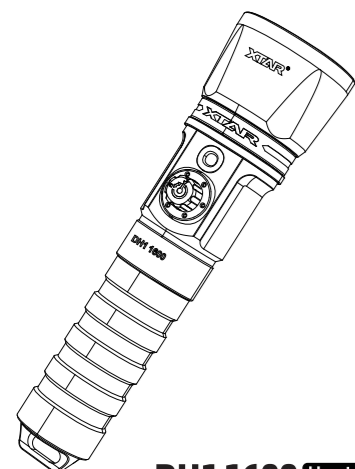
Facebook

Shenzhen XTAR Electronics Co., Ltd
Address: 5th Floor, No.77 Xinhe Rd, Shangmugu, Pinghu Area, Longgang District, Shenzhen, Guangdong, China Zip Code: 518111

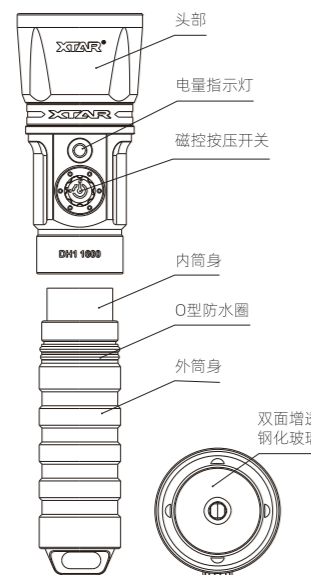
Website: www.xtar.cc Email: info@xtar.cc
Tel / Fax: +86-755-25507076

Made in China

XTAR®
Quality and Innovation
产品手册



DH1 1600 Hunter
超聚光高流明捕鱼手电



产品介绍

为捕鱼而生的专业潜水手电筒，DH1特殊牢靠的双筒身设计确保了无与伦比的安全性和在水下环境中的强劲性能。凭借人性化的多重保护、电量指示和极致单手操作等设计，这款1600流明的潜水手电当之无愧为捕鱼最佳搭档。

产品特点

- Luminus SST-40 LED灯珠，发光效率高，最大1600流明。
- 1节可充21700锂电池供电（建议带保护板）。
- 磁控按压开关，独立结构防漏水，单手一键开或关。
- 机械锁定，防止误触。
- 电量提醒功能。
- 高效电路，恒定输出，延长LED使用寿命。
- IPX8水下100米防水等级。
- 军规三级硬质阳极氧化，防摔耐磨不易刮花。
- 轻量简约，操作简便。
- 内筒身导电，防漏电，防腐蚀。
- 防反接保护、过放保护、智能温控、水陆两用。

产品技术参数

型号	DH1 1600
灯珠	Luminus SST-40
输出	最大1600LM
续航	≥2.5小时（使用XTAR可充21700 4900mAh保护锂电池测得）
电池	1节可充21700锂电池（建议带保护板）
聚光角度	中心光斑5°
发光角度	60°
色温	6500K
显色指数	70
发光强度	31450cd
最大射程	355米
防水等级	IPX8（水下100米）
防跌落高度	1.5米
开关系统	磁控按压开关
外壳材料	军规三级硬质阳极氧化铝合金
镜片材质	双面增透膜钢化玻璃
尺寸	168mm(总长) x φ29mm(外筒身) x φ45mm(头部)
净重	213g（不含电池）

产品操作说明

1. 将外筒身旋离头部；
2. 检查防水圈性能，按需清洁、润滑和替换新的防水圈；
3. 放入1节满电21700可充锂电池，电池正极(+)朝向手电筒头部；
4. 将外筒身旋回头部；
5. 单次按压磁控开关点亮手电筒，再次按压关闭手电筒。

电量指示灯

绿灯	红灯	红灯闪烁
电量充足	可用时长30分钟	可用时长10分钟

产品使用及维护

- 1、下水前请拧紧所有部件。
- 2、每次潜水前检查密封件和O型防水圈是否完好，并定期润滑O型防水圈。
- 3、每次潜水后，用清水冲洗手电筒，去除残留的盐、沙子和泥土。打开电池仓或存放前，用干净的毛巾擦干。
- 4、每次使用过后，及时取出电池。
- 5、手电筒在使用过程中会发热并自动降低流明，在保证照明的情况下最大化续航时间、手电筒和电池寿命。
- 6、请勿将灯光对准眼睛以防造成伤害。
- 7、手电筒处于点亮状态时，请勿长时间将灯头对准桌面、地面等放置，以免烧毁LED灯珠。



售后服务

请提供带保修号的产品及发票（或收据）以获得售后服务。

- **15天免费包换。**
- **24个月免费保修。**超出保修期的维修需要您支付材料和运输费用。
- **终身技术支持。**

请注意:

- 因用户未按照本手册使用或保管不当而产生的故障不享有包换和保修服务。
- 如有售后问题，请联系官方售后邮箱：service@xtar.cc。

防伪查询

- 1、刮开防伪码。防伪码位于：（1）产品后壳上，或（2）外包装盒上，共18位，请小心刮开。
- 2、在官网查询页面输入防伪码：www.xtar.cn -联系我们 - 防伪查询。



微信公众号

深圳市爱克斯达电子有限公司
地址：广东省深圳市龙岗区平湖街道上木古社区新河路77号5楼

官网：www.xtar.cn 邮箱：info@xtar.cc
电话/传真：(+86) 755-25507076 邮编：518111

中国制造