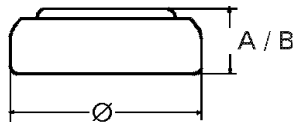


Data Sheet

Type Number 20357
System Silver oxide / Zinc/
 KOH - Electrolyte



Nominal Voltage 1,55 V
Typical capacity C 145 mAh
 Load 5,6 kOhm, at 20°C down to 1.2 V

Weight, approx 2,05 g
Volume 0,51 ccm
Coding Date of Manufacturing
 Month/Year

Temperature Ranges min. max.
 Storage -10°C 65°C
 Discharge -10°C 65°C

Dimensions min. max.
 Diameter 11,25 11,6
 Height (A/B) 5,0 5,4

Segment Watch

Main Application Medical
 Photo
 Electronic

Typical Capacities (at 20°C)

Discharge Type	Load	End-Voltage	1.2 V
Continuous (24 h/d, 7 d/w)	5600 Ω	Time	545 h
Current, [μA]	275	Capacity [mAh]	145
		Energy [mWh]	215